



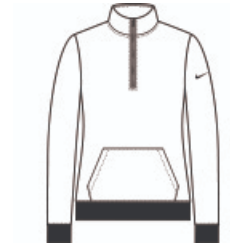
Nike Women's Club Fleece Sleeve Swoosh 1/2-Zip NKDX6720



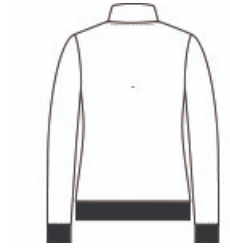
Built with versatility in mind, this brushed-back 1/2-zip has an elevated look which makes it perfect for work or play. Design details include a zip-through collar with dyed-to-match zipper. Front pouch pocket. Rib knit cuffs and hem. A contrast Swoosh logo is embroidered on left sleeve. Made of 8.3-ounce, 80/20 cotton/polyester.

CARE INSTRUCTIONS

Machine Wash Cold. Wash With Like Colors. Do Not Use Softeners. Remove Immediately. Do Not Allow To Lay On Itself When Wet. Do Not Bleach. Tumble Dry Low. Cool Iron. Do Not Dry Clean.

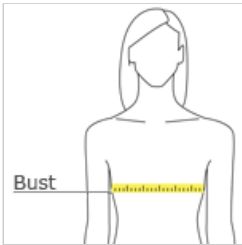


front



back

HOW TO MEASURE



BUST
Measure under the arm and around the fullest part of the bust with arms down, keeping tape horizontal.

SIZE CHART

| | S | M | L | XL | 2XL |
|------|---------------|-------------|-------|-----------|-----------------|
| Size | 4/6 | 8/10 | 12/14 | 16/18 | 20/22 |
| Bust | 32 1/2-35 1/2 | 35 1/2 - 38 | 38-41 | 41-44 1/2 | 44 1/2 - 48 1/2 |

COLOR INFORMATION

Please note: PMS code information is shown only when an exact match is available.



Anthracite
PMS 432C



Black
PMS BLACK C



Dark Grey Heather
PMS 422C



Game Royal
PMS 661C



Light Game Royal
Heather
PMS 7682C



Midnight Navy
PMS 296C



White