



OGIO® Ladies Luuma Sherpa Full-Zip. LOG815

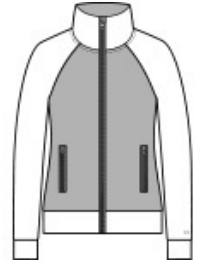


A sherpa fleece body joins performance poly for the ultimate in coziness and mobility.

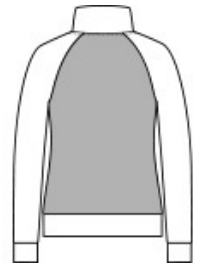
- 13.6-ounce, 100% polyester sherpa fleece body
- 8.3-ounce, 52/44/4 poly/cotton/spandex outer collar, sleeves and hem
- Exaggerated cowl neck
- OGIO heat transfer label for tag-free comfort
- Exposed molded zippers with debossed O zipper pulls
- O heat transfer on left sleeve
- Front zippered pockets

CARE INSTRUCTIONS

Machine wash cold with like colors. Do not bleach. Tumble dry low. Do not iron. Do not use fabric softener. Do not dry clean.

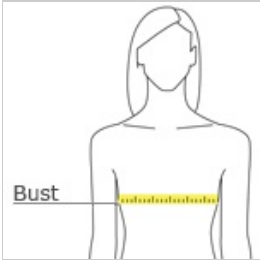


front



back

HOW TO MEASURE



BUST

Measure under the arm and around the fullest part of the bust with arms down, keeping tape horizontal.

SIZE CHART

	XS	S	M	L	XL	2XL	3XL	4XL
Size	2	4/6	8/10	12/14	16/18	20/22	24/26	29/30
Bust	32-34	35-36	37-38	39-41	42-44	45-47	48-51	52-55

COLOR INFORMATION



Blacktop
PMS BLACK C



Ivory Snow